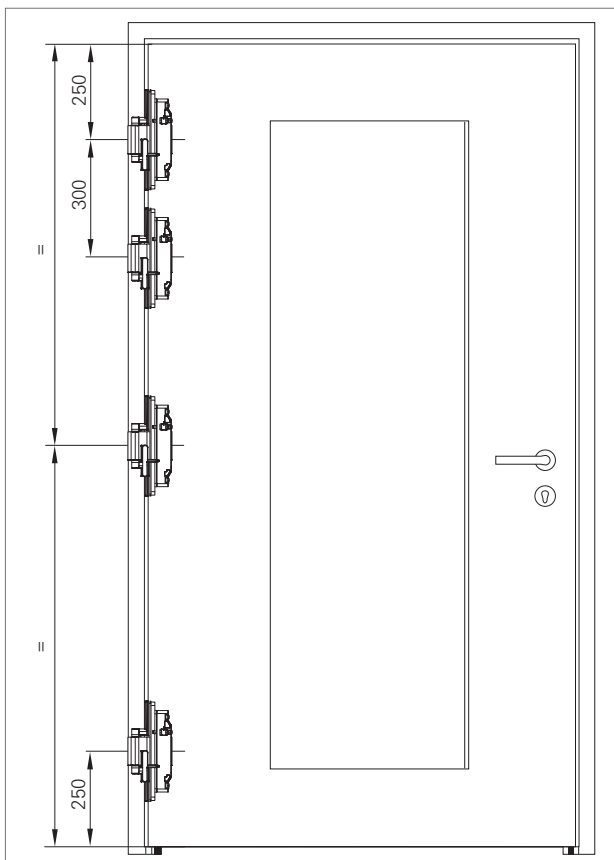
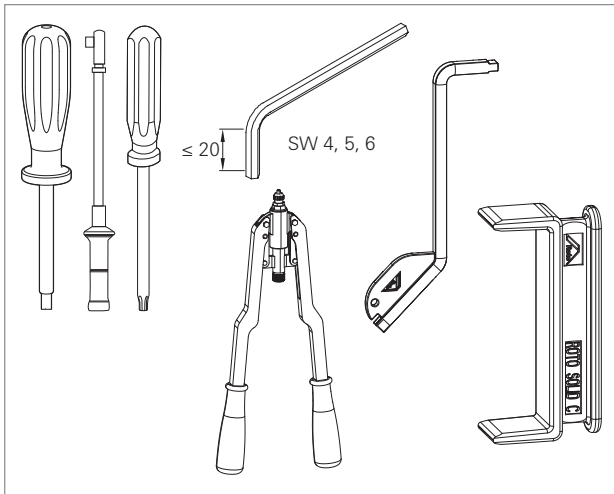


INFO

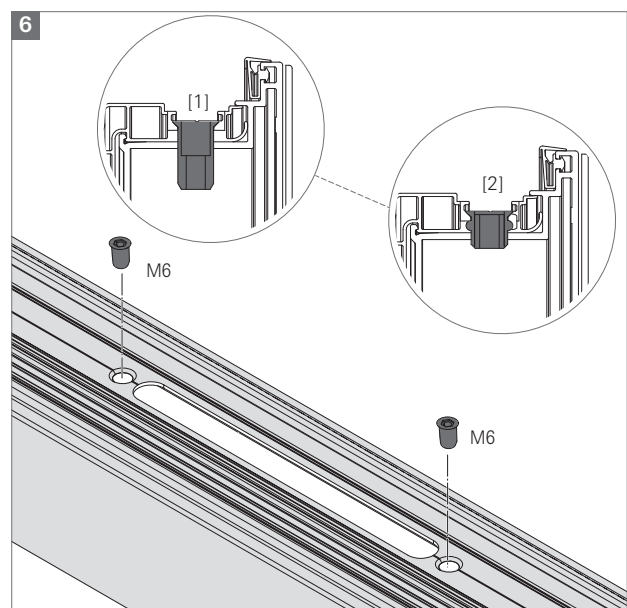
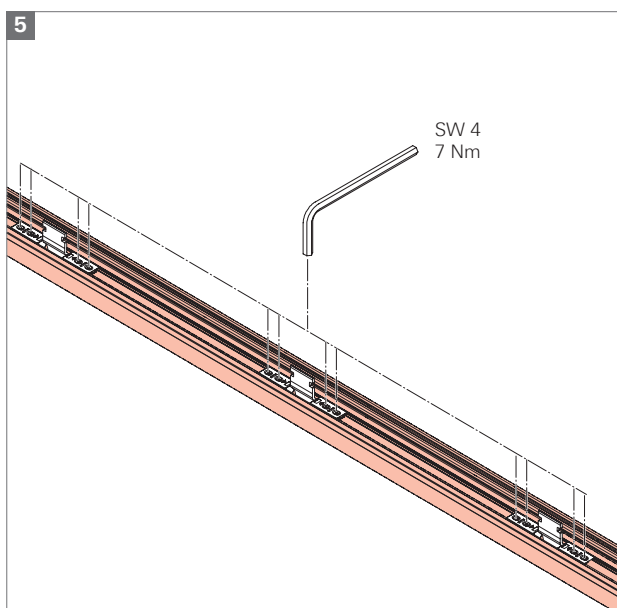
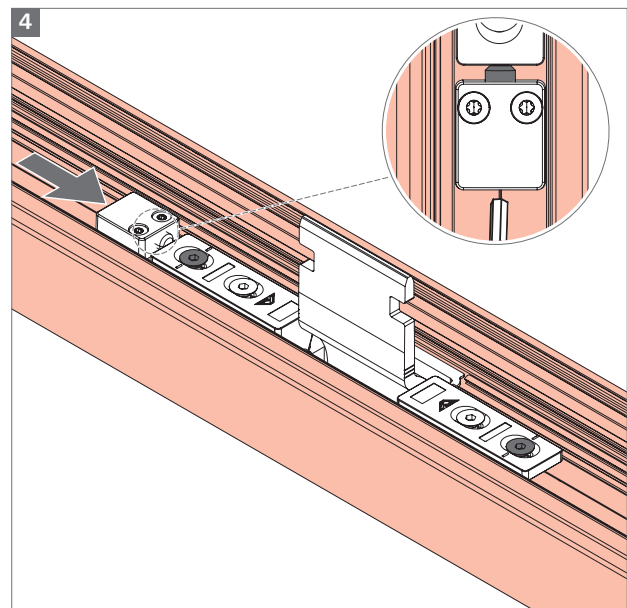
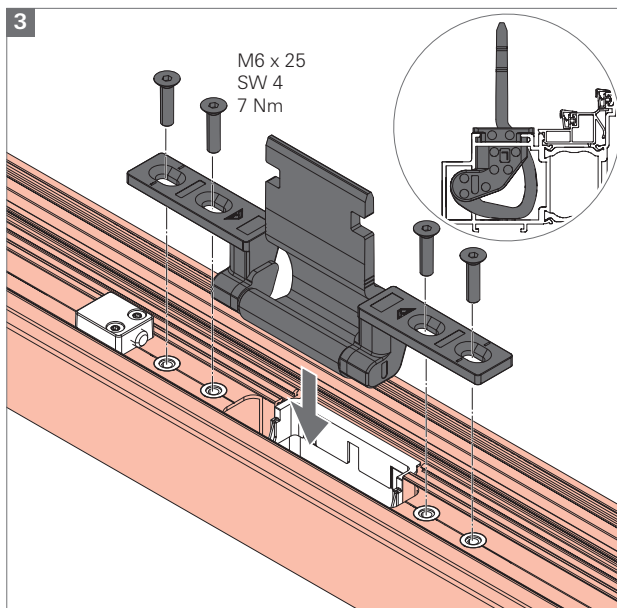
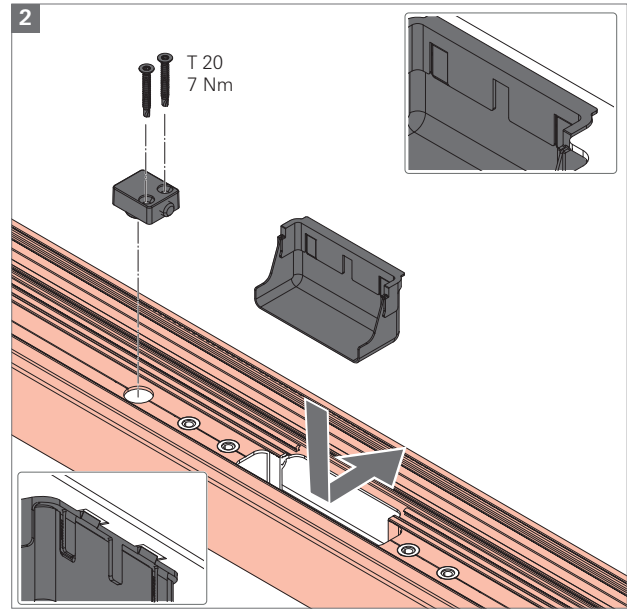
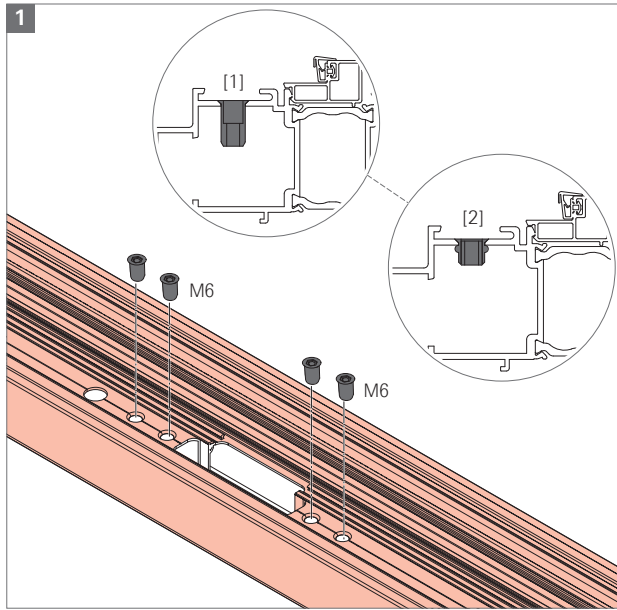
Fräszzeichnung beachten.

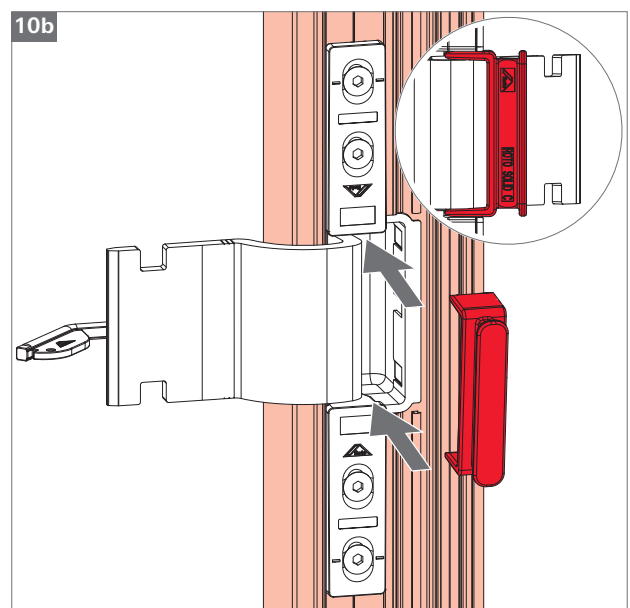
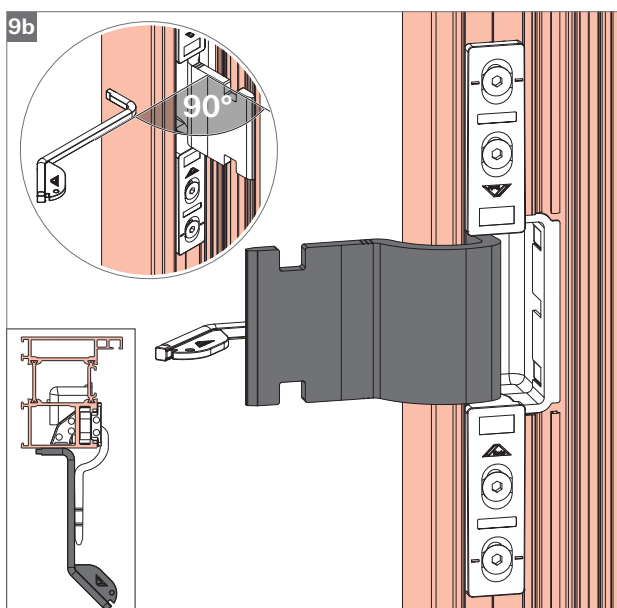
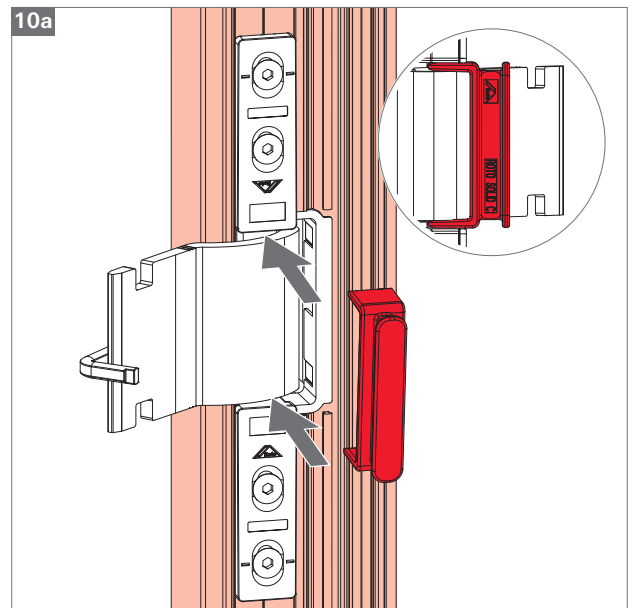
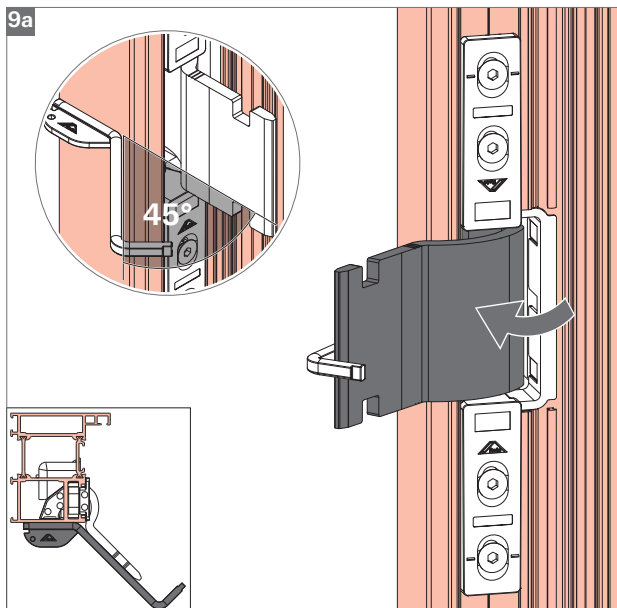
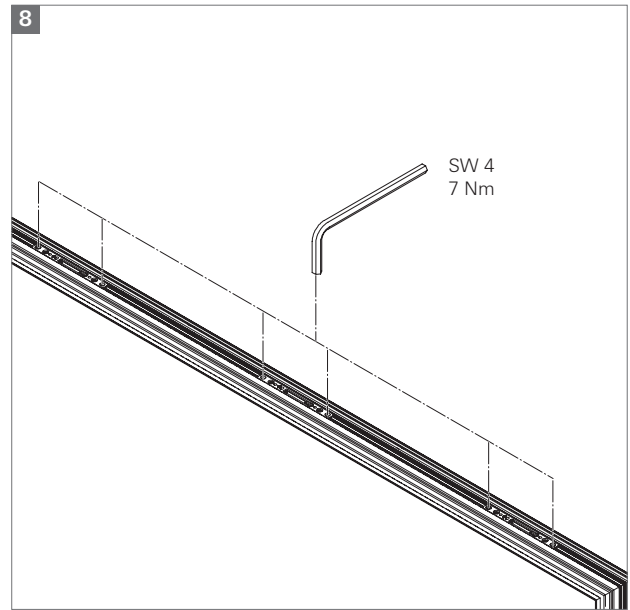
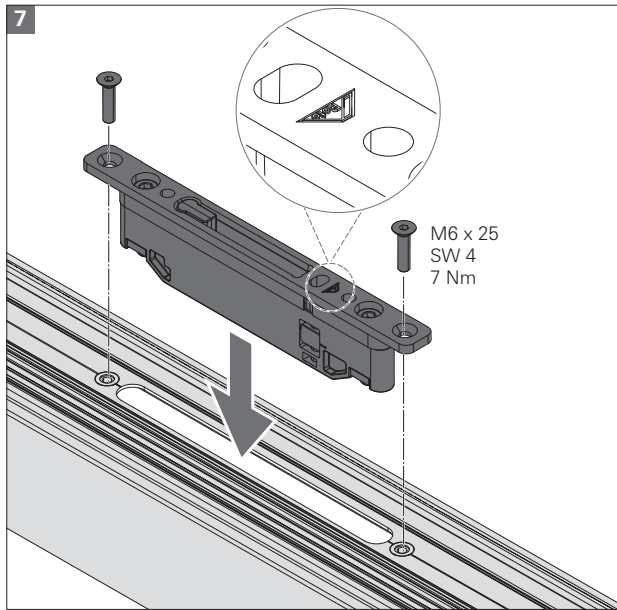


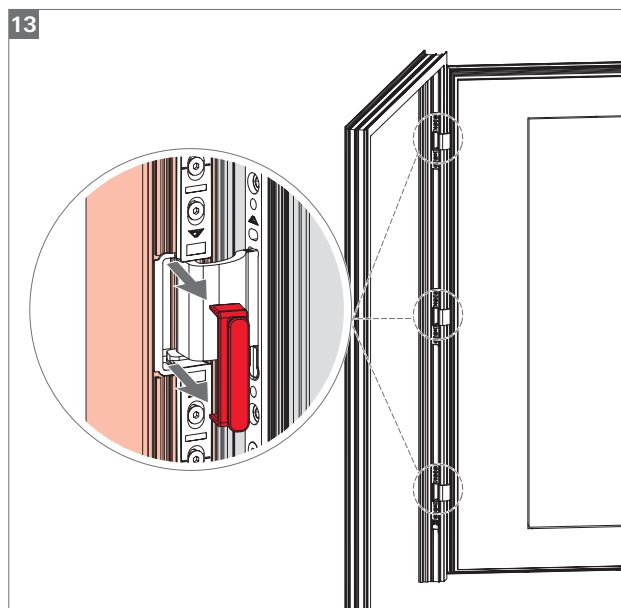
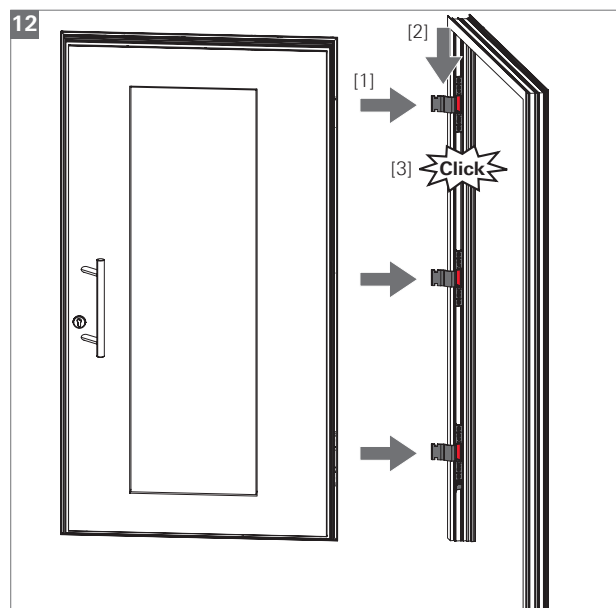
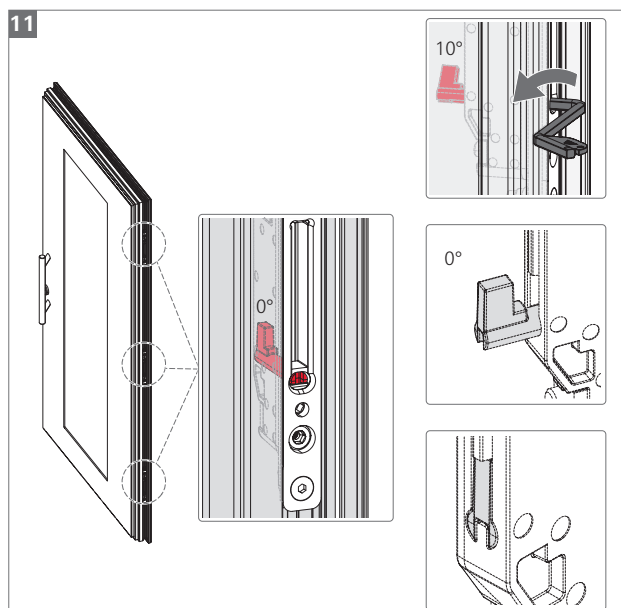
INFO

- FH > 2200 mm = 3 Bänder
FH > 2500 mm = 4 Bänder
 - mit Türschließer = ≥ 3 Bänder
 - 100 kg = 2 Bänder
140 kg = 3 Bänder
- CTL_88

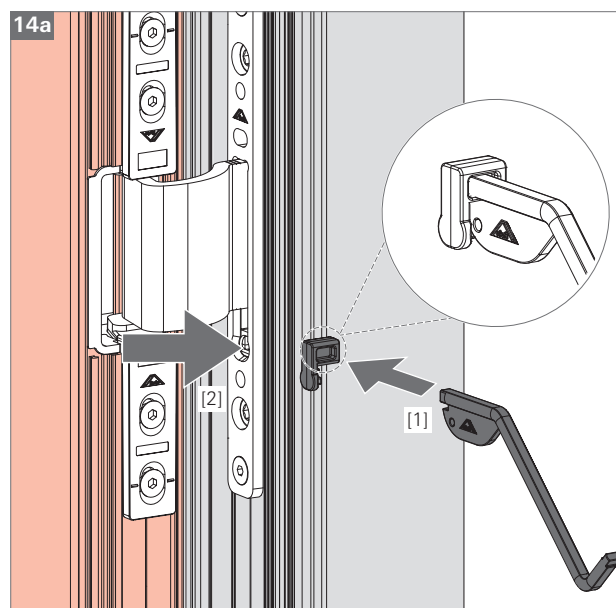
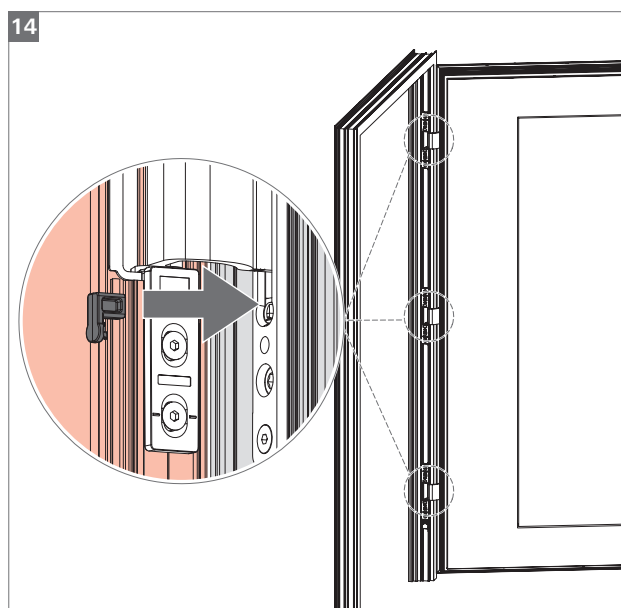
Montage

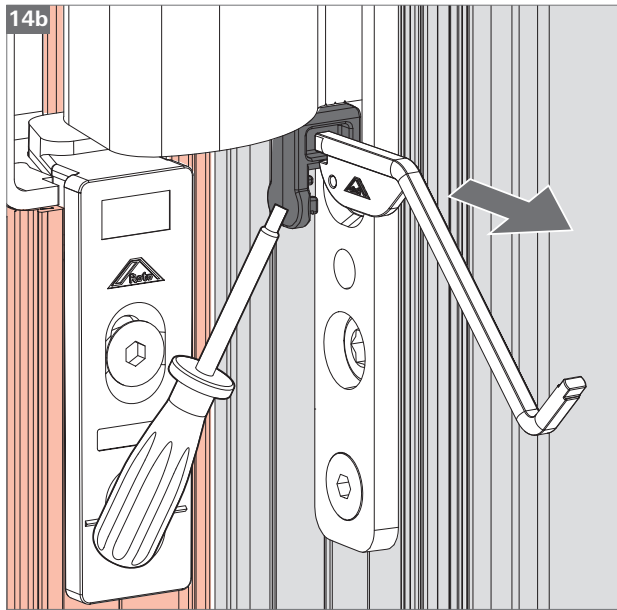






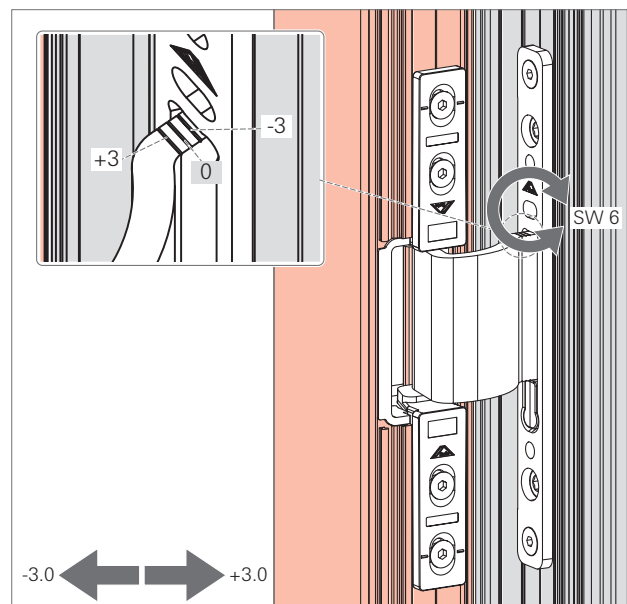
i **INFO**
Türstopper oder Drehbegrenzer verwenden, sonst Kollision zwischen Flügel und Rahmen (Öffnungswinkel profilabhängig).

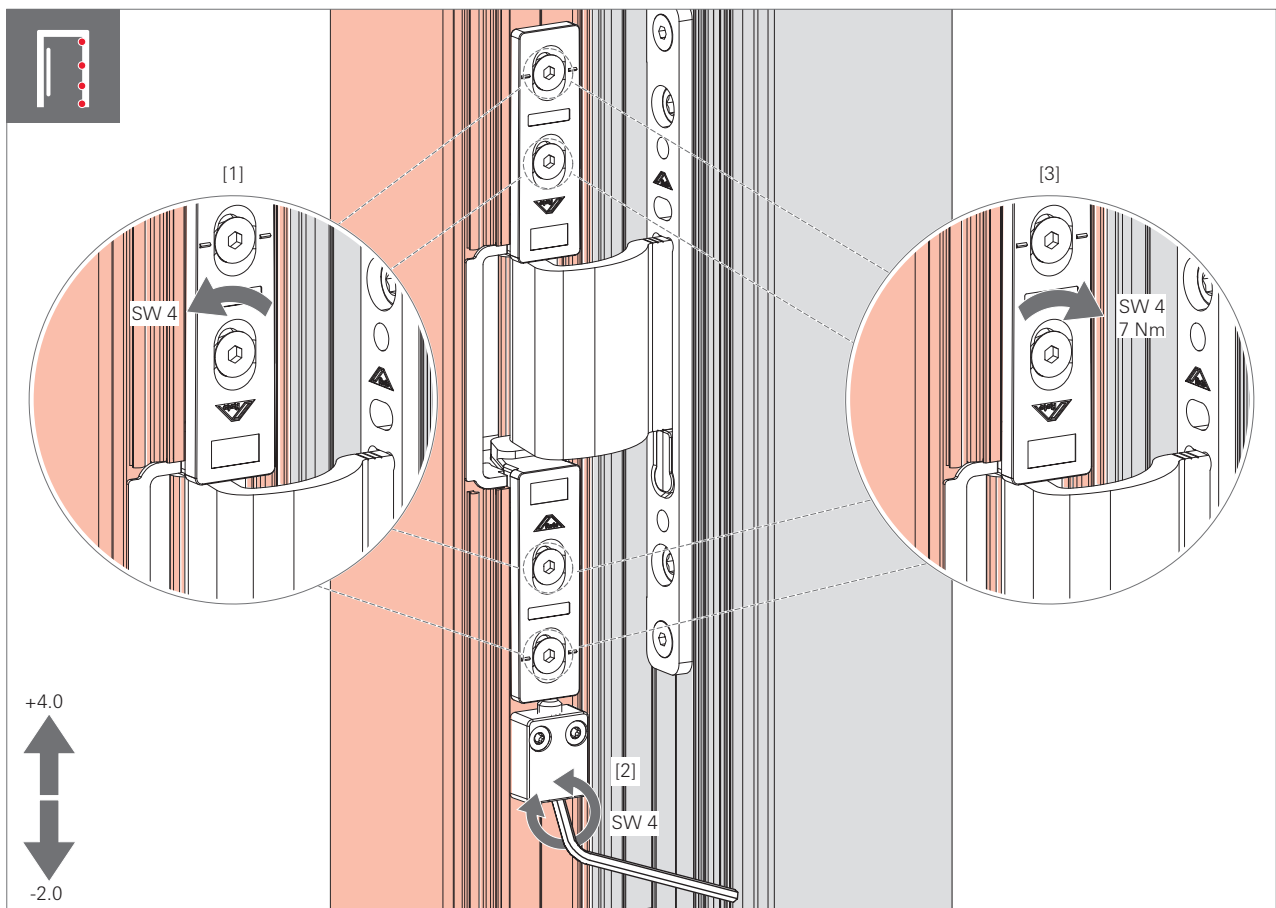
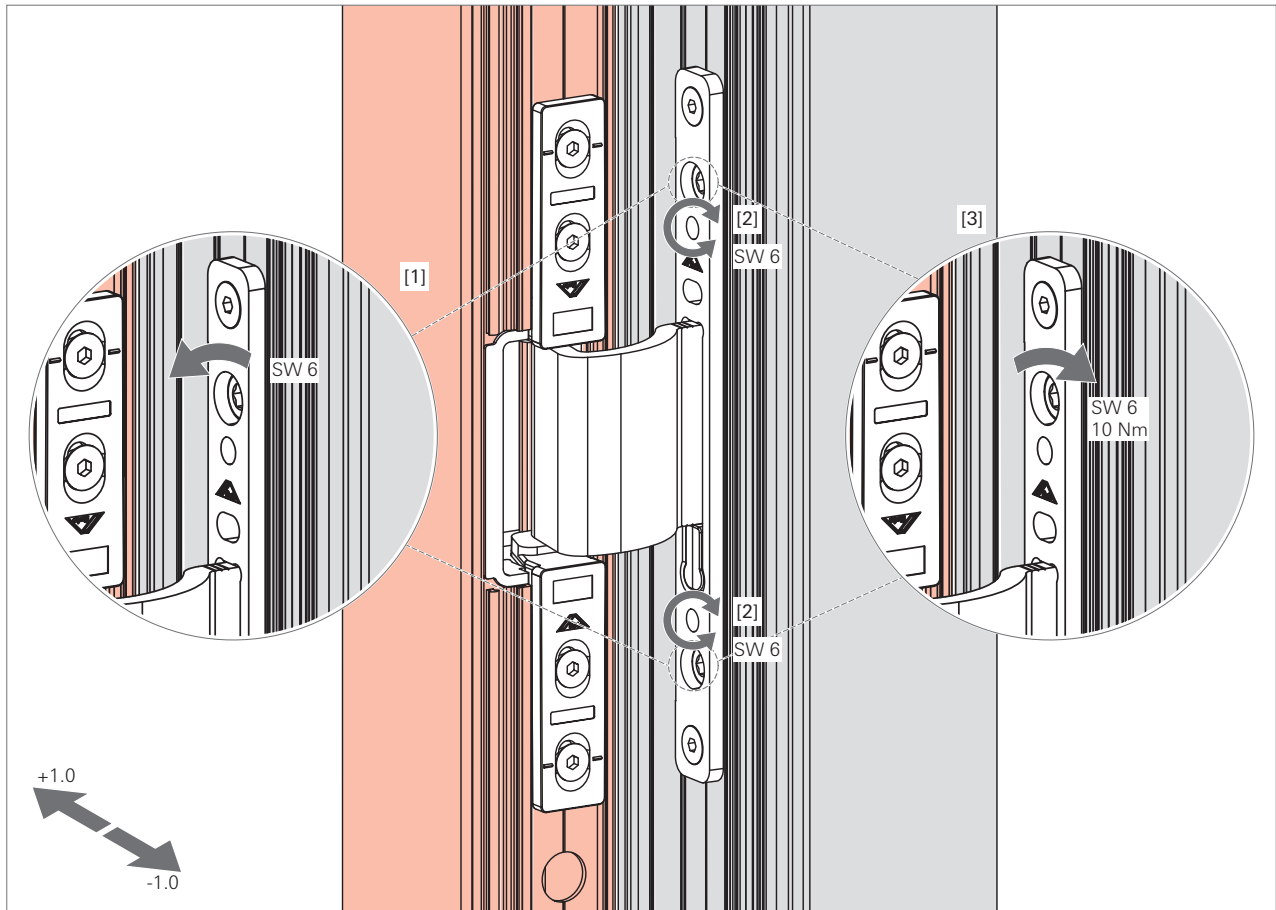




Justierung

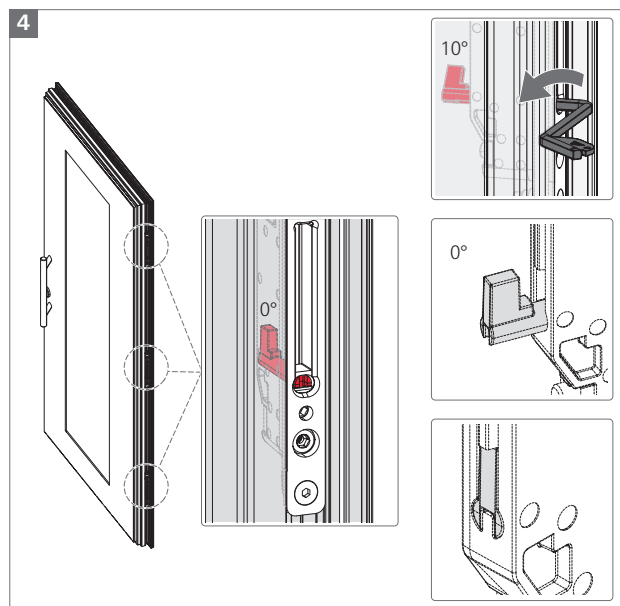
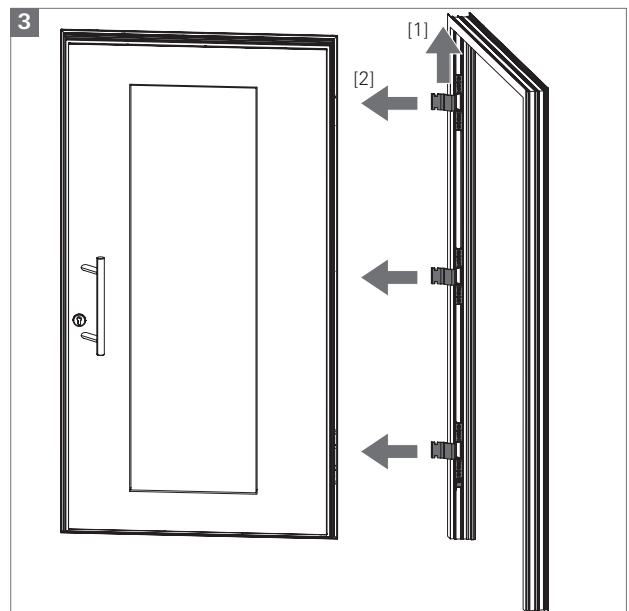
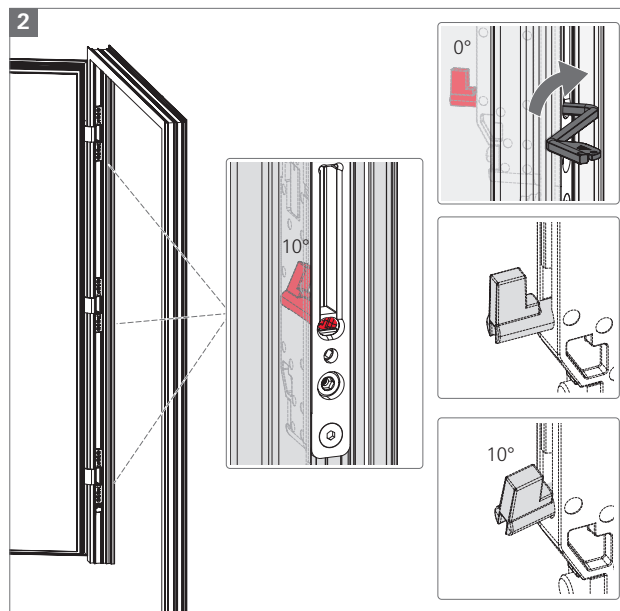
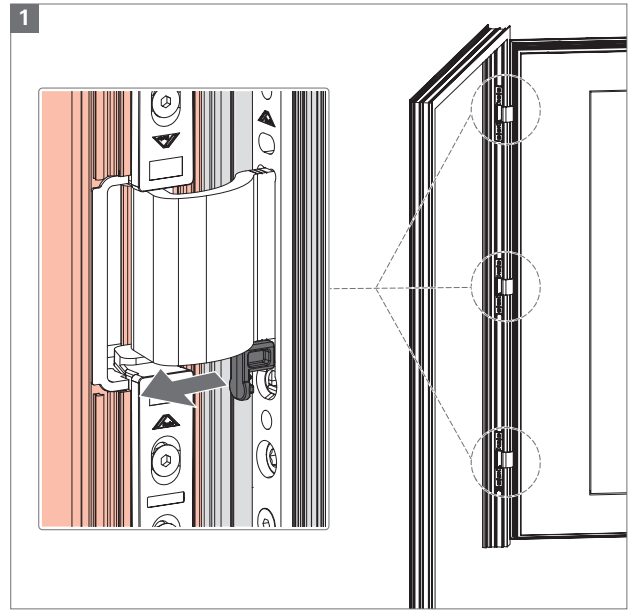
i **INFO**
Wenn nötig Tür vor Justierung entlasten.





Demontage

INFO
Wenn nötig Tür vor Demontage entlasten.



CE

0757
Roto-Frank Austria GmbH
Lapp-Finze-Str. 21
A-8401 Kalsdorf bei Graz
Austria

Türband lt. EN1935 – Roto Solid C7.140

LE/DoP-Nr. : KD/DoorC7.140/Nr. 001/CPR/2017-02-09

17
EN 1935:2002-05
Türband 3-teilig
für Türen in Rettungswegen

Selbstschließend bestanden
(-3Nm Reibmoment)
(60kg Türmasse)
(120kg Belastungsverformung)
(180kg Überbelastung)

Dauerfunktionstüchtigkeit bestanden
(200 000Zyklen)

Gefährliche Substanzen bestanden

Gebrauchsklasse	Dauerfunktion	Masse Tür	Feuer-/Rauchschutz	Sicherheit	Korrosionsverhalten	Sicherheit Einbruchschutz	Brandklasse
2	7	3	0	1	4	0	10

Zertifikat zur Bescheinigung der Leistungsbeständigkeit
Nr. 0757-CPR-229IFT-7031575-2 erstellt durch
in Rosenheim NB-Nr. 0757